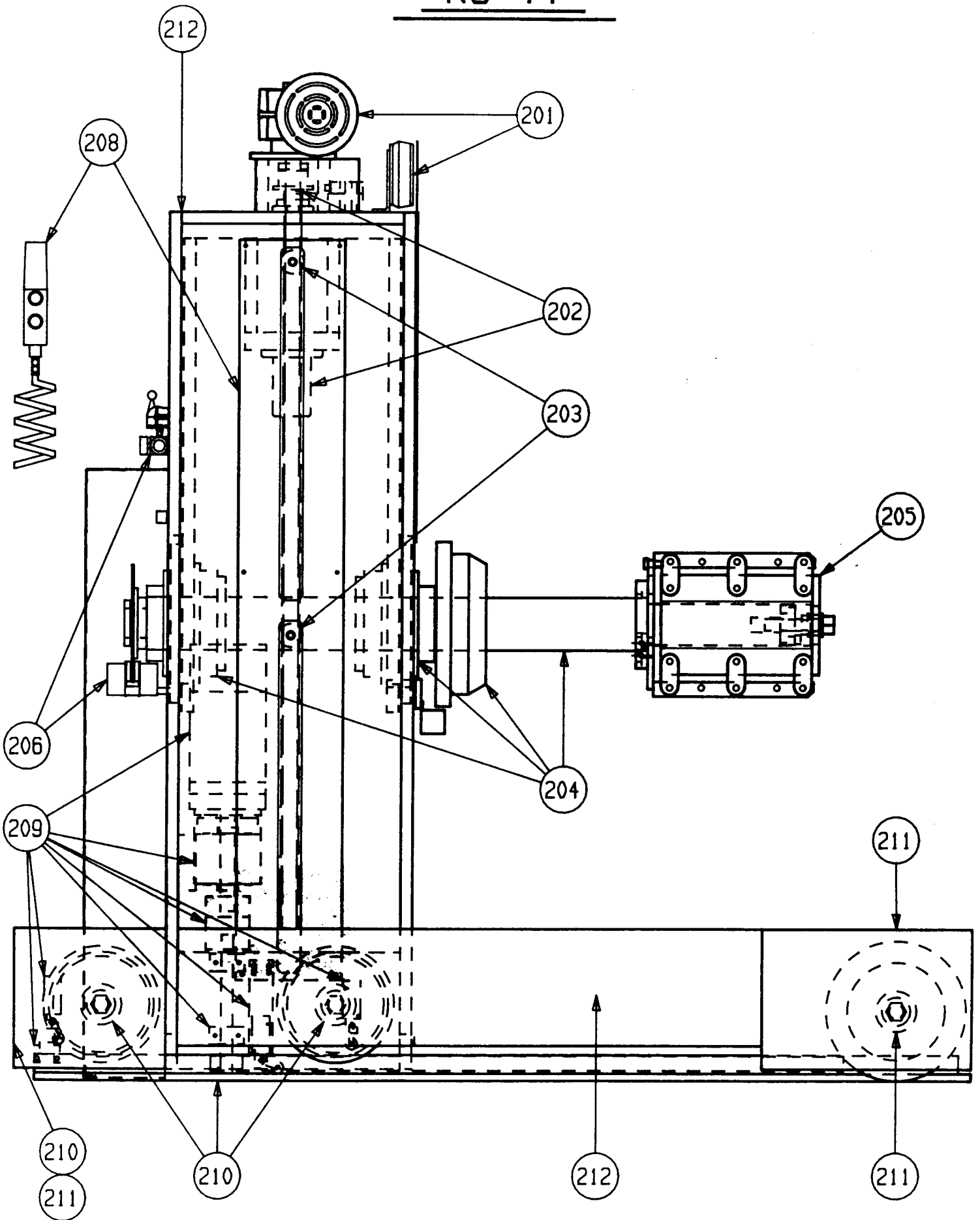


RS-44

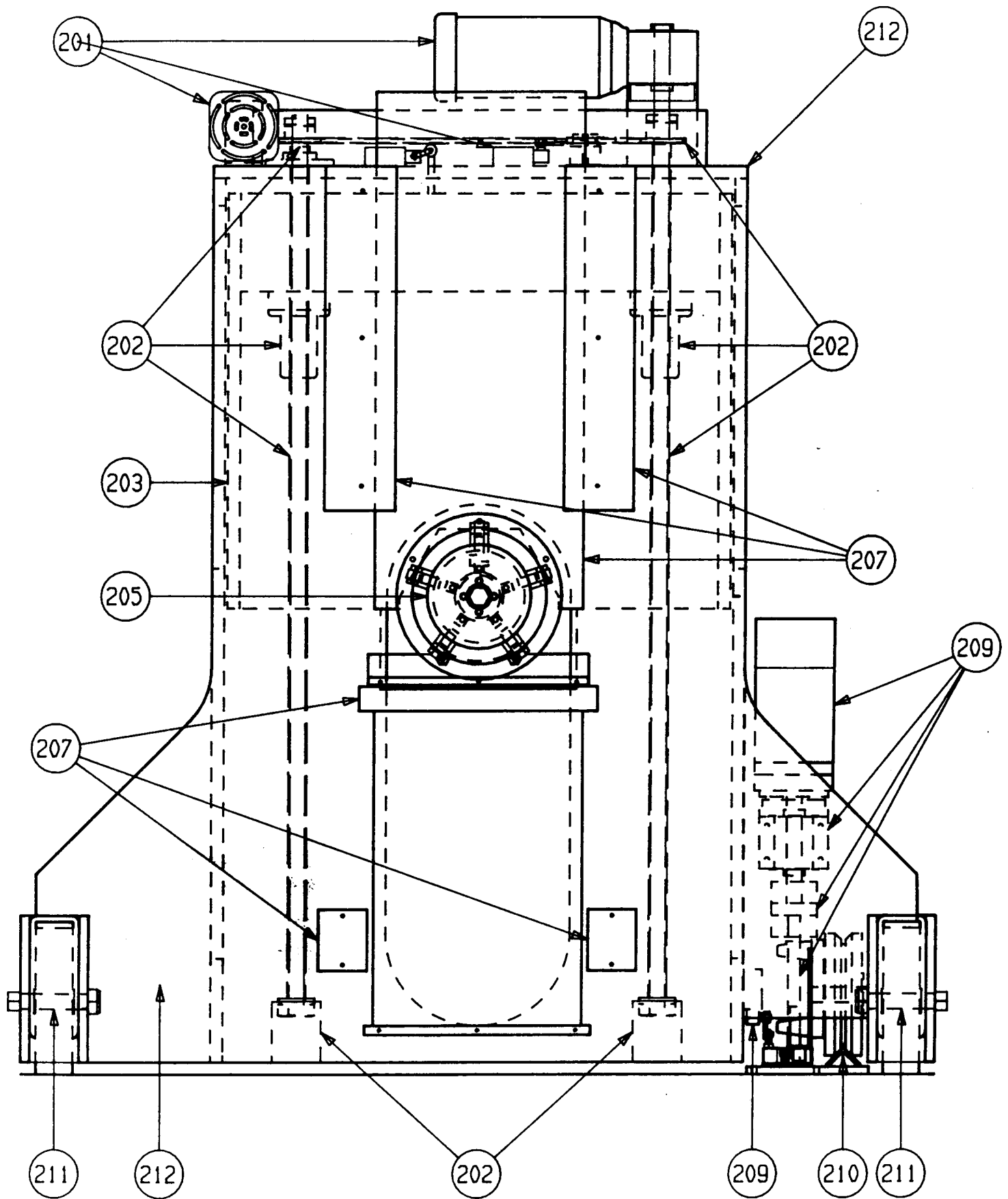
VERTICAL LIFT ROLL STAND

CUSTOMER PARTS MANUAL

# RS-44



# RS-44





---

## PEERLESS

### SAFETY

Peerless believes that the machinery covered in this manual represents the finest in design and construction available in the paper and plastic converting industry today.

With the proper care in maintenance and careful attention to safety of operation, this equipment will give you years of safe and trouble free operation.

We at Peerless have strived to meet the challenge of safety on every level of design, whether it be in electrics, pneumatics, or mechanical applications.

We state, without reservation that every area of design which could be hazardous to the physical well being of the operators, or attending personnel, has been guarded to the best of our ability and the design knowledge available.

Under normal operation, no guards or safety connected devices should be removed at any time for any reason.

When normal servicing is performed, all power to the machinery should be shut down and all safety stop switches should be set, or engaged.

Know your machinery thoroughly and understand the working parts as well as you can as it will aid in the safe operation of same.

Take all equipment serious and always be alert for any abnormal operation conditions which might arise. Should this happen, immediately shut down the machine involved and engage all safety stop switches. Alert your supervisory personnel at once.

We are proud of the Peerless name and reputation gained over the past 50 years or more.

Our safety and reliability record are "without equal", the very meaning of the word "Peerless".

**Peerless Machine & Tool Corporation**

1804 West Second Street · PO. Box 385 · Marion, Indiana, U.S.A. 46952

Telephone 317-662-2586 Fax 317-662-6067

## DO'S AND DON'TS FOR OPERATION OF PEERLESS MACHINERY

1. Don't ever service, maintain, alter, adjust or modify the equipment in any manner unless properly trained to do so, and unless the equipment is completely shut-down using all power disconnections and safety locks or interlocks. Follow current lockout/tagout regulations.
2. Don't ever allow any personnel to operate or service machinery in any manner unless properly trained to do so.
3. Don't ever perform any operation on the machinery with the aid of any other person if that person is not properly trained in such operation or service procedure.
4. Don't ever allow service personnel or operating personnel to have any other person turn on the equipment while any maintenance, adjustment, or service is being performed on machinery.
5. Do check regularly to insure that guards, safety decals and features of the machinery are in place and operating properly.
6. Do replace safety guards, decals and features with new updated guards, decals and features as they are designed and made available.
7. Do report any safety problems or questionable operations to supervisory personnel.
8. Do properly train all personnel in the proper use and maintenance of the machinery.
9. Do follow all national, state, regional and local regulatory codes in the installation and operation of all machinery.
10. Don't use any machinery or feature of any machine which has had a guard removed, replaced or modified unless properly trained in such operation and the replacement features have been properly approved by Peerless.
11. Don't permit any alteration, correction, addition or maintenance of any machine unless done by personnel properly trained by Peerless, or unless performed by Peerless personnel.
12. Don't use the machinery for any purpose for which it was not designed and recommended by Peerless.
13. Don't do any maintenance or clear any machine jams or correct any malfunctions unless the machine is completely shut-off, and you are properly trained in such steps.

14. Do report any machine malfunctions to supervisory personnel. Report to Peerless any machine defect or design flaw.

15. Do routinely inspect all hydraulic and pneumatic hoses and fittings. Replace any component at the first sign of wear with an authorized Peerless replacement part.

16. Don't permit any item or material, such as new paint to cover up or distort any safety feature or safety instruction. Particularly, do not cover up any safety decal. Replace any decal which becomes unreadable.

17. Do routinely check all machinery to insure proper operation. Don't ever operate a machine that is malfunctioning or continually jamming.

18. Do provide adequate light, clean area and a safe operating area for any machinery. Don't ever operate a machine that is not properly secured, connected or in any way presents a dangerous operating condition due to the machine itself or the working area around the machine.

19. Don't ever troubleshoot the equipment unless properly trained to do so.

20. Do require all personnel around the machinery to wear proper clothing and equipment. Don't permit any employee to wear loose clothing or any item which would create an unsafe working condition.

21. Don't, Don't, Don't ever put hands, fingers or any clothing or material in an area close to a moving part of machinery.

22. Do use proper recommended tools for clearing of any and all jams. Never use hands or fingers to clear jams or to correct malfunctions of machinery.

23. Don't ever change dies or other auxiliary equipment parts or items unless machine is completely shut down and you are properly trained in the procedure.

24. Don't ever use old machinery acquired from someone other than Peerless, unless the machinery has been updated at the Peerless plant or at your plant with proper Peerless personnel providing new updated safety features and guards.

## ROLL STAND INSTALLATION

ALIGN THE ROLL STAND WITH THE PRESS AS SHOWN ON THE GENERAL FLOOR PLAN ARRANGEMENT FOR THE PARTICULAR MACHINE, AND THE FLOOR PLATE LOCATION DRAWING, 88STDRPL.DWG.

ANCHOR THE ROLL STAND FLOOR PLATE TO THE FLOOR USING SUITABLE FASTENERS FOR YOUR APPLICATION.

INSTALL THE MAIN POWER SERVICE USING THE COIL CORD PROVIDED WITH THE ROLL STAND. BE SURE THAT THE CORD CAN MOVE AND EXPAND WITH THE ROLL STAND AND THAT IT DOES NOT BIND OR TIGHTEN UP DURING THE ROLL STAND MOVEMENT.

INSTALL A 1/4" ID FLEXIBLE HOSE, 80 PSI, COMPRESSED AIR SUPPLY TO THE ROLL STAND. BE SURE THAT THE HOSE CAN MOVE WITH THE ROLL STAND AND THAT IT DOES NOT BIND OR TIGHTEN UP DURING THE ROLL STAND MOVEMENT.

CHECK THE MOTOR ROTATION DIRECTION OF THE HORIZONTAL AND VERTICAL TRAVEL MOTORS. CAUTION: DO NOT PUSH THE UP-DOWN PUSH BUTTONS BEFORE CHECKING ROTATION, DAMAGE MAY OCCUR. THE ROLL STAND SHOULD MOVE OUT TO PICK UP A ROLL WITH THE OUT PUSH BUTTON, AND IN TO THE OPERATING POSITION WITH THE IN PUSH BUTTON.

## ROLL STAND OPERATION

WITH A 1 1/2" SOCKET WRENCH, TURN THE CHUCK EXPANSION BOLT COUNTER-CLOCKWISE TO COLLAPSE THE CHUCK.

REMOVE THE EMPTY PAPER CORE FROM THE CHUCK.

POSITION A NEW PAPER ROLL IN FRONT OF THE ROLL STAND WITH THE ROLL CORE IN LINE WITH THE ROLL CHUCK.

USING THE UP-DOWN PUSH BUTTONS LOCATED ON THE ELECTRICAL PANEL, POSITION THE ROLL SHAFT CENTER LINE AT THE PAPER ROLL CENTER LINE.

USING THE HAND HELD PENDENT CONTROL, MOVE THE ROLL STAND "OUT" TO ENGAGE THE ROLL. VERIFY THAT THE ROLL CHUCK ENTERS THE ROLL CORE WITHOUT RUBBING THE CORE.

VERIFY THAT THE EXPANDABLE CHUCK IS CENTERED IN THE ROLL CORE IN THE VERTICAL DIRECTION, AND THAT THE CORE INSERT FLANGE IS TIGHT AGAINST THE PAPER ROLL. WITH A 1 1/2" SOCKET WRENCH, TURN THE CHUCK EXPANSION BOLT CLOCKWISE TO EXPAND THE CHUCK UNTIL IT TOUCHES THE ROLL CORE. VERIFY THAT THE CHUCK IS CENTERED IN THE ROLL CORE IN THE VERTICAL DIRECTION AND TORQUE THE CHUCK EXPANSION BOLT TO 100 FOOT POUNDS.

USING THE UP-DOWN PUSH BUTTONS LOCATED ON THE ELECTRICAL PANEL, RAISE THE PAPER ROLL ONE INCH OFF THE FLOOR.

ADJUST THE LIMIT SWITCH STRIKER ABOVE THE MEASUREMENT SCALE TO THE PAPER ROLL WIDTH IN INCHES. USING THE HAND HELD PENDENT CONTROL, MOVE THE ROLL STAND "IN" TO ITS OPERATING POSITION.

ADJUST THE DISC BRAKE AIR PRESSURE REGULATOR TO A PRESSURE JUST HIGH ENOUGH TO STOP THE ROLL FROM COASTING WHEN THE PRESS PULL ROLLERS DISENGAGE. THIS PRESSURE MAY NEED TO BE ADJUSTED PERIODICALLY AS THE WEIGHT AND DIAMETER OF THE PAPER ROLL CHANGES.

THE ROLL STAND IS CAPABLE OF LOADING AND UNLOADING PAPER ROLLS WITH DIAMETERS BETWEEN 24 AND 72 INCHES. TO UNLOAD ROLLS, REVERSE THE ABOVE PROCEDURE.



## ROLL STAND LUBRICATION SCHEDULE

LUBRICATE ALL GREASE ZERKS MONTHLY. THIS INCLUDES TWO MAINSHAFT BEARINGS, AND ONE UPPER BALL SCREW SUPPORT BEARING WITH MOLUB-ALLOY 823-Ø FOOD MACHINERY GREASE.

LUBRICATE THE BALL SCREW THREADS AND NUT, MONTHLY, WITH MOLUB-ALLOY OPEN GEAR SPRAY OR MOLUB-ALLOY 369 DRY FILM LUBRICANT.

LUBRICATE THE CHUCK EXPANSION BOLT THREADS AND NUT, DAILY, WITH MOLUB-ALLOY OPEN GEAR SPRAY OR MOLUB-ALLOY 369 DRY FILM LUBRICANT.

CHECK AND REFILL, IF NECESSARY, THE GEAR BOX OIL LEVELS MONTHLY, PER MANUFACTURES INSTRUCTIONS.

### Product Data Sheet

Molub-Alloy 823 FM Greases were developed for general lubrication of food machinery operating in a wide range of temperatures. These FM Greases have been reviewed by the US Department of Agriculture and authorized for use under USDA Inspection and Grading Programs as Code H1 Lubricants, suitable for use where incidental contact with food is possible.

The base fluid, a U.S.P. White Petroleum Oil, and all other ingredients used in 823 FM Greases comply with sections 178.3570 and 178.3620 of the Federal Food, Drug and Cosmetic Act Regulations.

#### DESCRIPTION

A select base oil blend plus an FDA-approved, aluminum complex thickener provide good adhesion, film strength, and water-wash resistance even at elevated temperatures. Drip-free characteristics and the off-white color of Molub-Alloy 823 FM Greases complement housekeeping efforts in food and kindred industries.

A high performance combination of food grade additives provides excellent antiwear protection. The combination of additives and blending techniques maximize rust and oxidation characteristics for effective rust protection and long service life of the grease.

Molub-Alloy 823-0, 823-1, and 823-2 FM Greases meet NLGI Consistency Grades No. 0, No. 1, and No. 2 respectively.

#### APPLICATIONS

Molub-Alloy 823 FM were developed to lubricate food machinery in elevated temperature applications where incidental contact is possible.

823 is recommended for sleeve and antifriction bearings in overhead conveyors and other material handling equipment.

823 FM Greases may be applied manually or with automatic dispensing equipment.

Lighter consistency 823-0 FM Grease can be used in gear cases where a non-channeling slump grease is needed to control leakage.

#### ADVANTAGES

Molub-Alloy 823 FM Greases are H1 lubricants acceptable for use where incidental contact with food is possible.

Very high melting point and non-drip characteristics of this grease minimize product contamination.

Unique water resistance provides continuous protection even when equipment is washed down periodically.

#### NOTES

Not compatible with any other type of grease at temperatures above 121°C/250°F. Do not extend lubrication cycles until previous lubricant has been purged.

May be exposed briefly to very high temperatures without dripping. However, 823 includes petroleum fluid components which should not be exposed to prolonged high temperatures. Replenish before the grease stiffens.

For specific terms, conditions, warranty and availability, refer to Tribol Price List in effect at time of purchase.

## Product Data Sheet

Molub-Alloy Open Gear Grease (Aerosol) was developed to provide the extra protection required by open gears in heavy duty service where extreme pressures result from heavy or surge loading, and particularly where higher than usual ambient temperatures exist. Such conditions are common to kilns and mills in heavy industry and near drying or hot metal working processes.

A Select petroleum oil of high viscosity, modified with other petroleum derivatives forms an exceptionally tough film in service, which, even at elevated temperatures, resists the thinning and hardening associated with the more conventional asphaltic type gear compounds.

Molub-Alloy solid lubricants, in a proprietary formulation, constitute a major part of Molub-Alloy Open Gear Grease and function synergistically with additional extreme pressure components to provide the necessary protection in severe service. Even the unique thickening system in this grease is a contributing solid lubricant.

### DESCRIPTION

Components are selected for the manufacture of Molub-Alloy Open Gear Grease on the basis of quality, compatibility, and particularly for their intended use. The Molub-Alloy solid lubricants are of a proven combination and size distribution for use on open gears and heavy sliding mechanisms.

Extreme pressure properties are maximized by the use of the most effective, non-corrosive EP agents available. They complement the anti-wear, anti-seize performance of Molub-Alloy solid lubricants in protecting against severe load conditions and in higher than normal ambient temperatures.

Components, including the thickening system, were selected to constitute a product which will not drip or fling-off even at very high temperatures (over 400°F).

### APPLICATIONS

Typical applications for Molub-Alloy Open Gear Grease have been on open gears wherever high torque and slow surging loads necessitate the extra protection of extreme pressure (EP) characteristics. It is especially suitable where ambient temperatures are higher than usual.

### ADVANTAGES

Wear protection beyond that of conventional open gear lubricants is provided by Molub-Alloy solid lubricants together with chemical extreme pressure additives. There is evidence of worn and even newly machined metal surfaces having improved in service under boundary lubricating conditions.

The lubricating film will not retain abrasive particles from the environment as readily as heavier asphaltic compounds.

Non-melt, non-drip characteristics minimize application and housekeeping costs.

Resistance to the washing action of hot or cold water is excellent.

Overall savings are derived from the above and result from less labor and downtime, smoother, more efficient operation with longer parts life, and extended lubrication cycles.

For specific terms, conditions, warranty, and availability, refer to Tribol Price List in effect at time of purchase.

## Product Data Sheet

Molub-Alloy 369 Dry Film Lubricant is formulated with a proprietary blend of Molub-Alloy lubricating solids in a stable suspension in a light, volatile carrier. The carrier solvent readily evaporates when 369 is applied leaving a tough film of lubricating solids behind on the surfaces to provide lubrication.

### DESCRIPTION

Molub-Alloy 369, as applied, consists of a heavy concentration of Molub-Alloy lubricating solids in a highly volatile, fluid carrier which has exceptional penetrating and spreading ability.

Molub-Alloy 369 in service, and after carrier evaporation, is a tough, dry film of lubricating solids bonded to the metallic surface to which it has been applied. This film does not retain dust, and is highly resistant to heat, chemical action, and water.

### APPLICATIONS

Typical applications are: the pre-lubrication of extremely close-tolerance parts, to aid in assembly; as a "dry" lubricant, where appropriate, such as in excessively dusty or gritty environments, where any oil-based lubricant would build up an abrasive paste; and in applications where the complete absence of lubricant leakage or dripping is mandatory.

### ADVANTAGES

Molub-Alloy 369 provides outstanding qualities as a pre-lubricant, in conjunction with the use of a Molub-Alloy oil or grease. Molub-Alloy 369 has excellent anti-seize properties for treating press-fit and close-tolerance machine assembly components.

The dried film of Molub-Alloy lubricating solids has the appearance of a finely-blued gun barrel. When bright metal areas begin to appear on the lubricated parts, it is time to relubricate.

Molub-Alloy 369 will show substantial reduction of wear when applied to equipment which is receiving little or no lubrication because of concern over lubricant leakage or contamination.

### NOTES

Molub-Alloy 369 is a "red label" product and all transportation, handling and storage precautions required by this (ICC) classification are to be observed. Bulk Containers should be kept tightly closed when product is not being dispensed. Product to be applied only in areas where adequate ventilation is provided.

Molub-Alloy 369 is packaged in bulk containers, and in aerosol spray cans.

Except for specialized applications where no other lubricant will work, Molub-Alloy 369 is not recommended as a replacement for either oil or grease, especially in applications where oil or grease is specified; neither is it recommended as the only lubricant in applications where high cyclic speeds or heavy loads prevail. In many instances, a combination of pre-lube with Molub-Alloy 369, and operating lube with some other appropriate Molub-Alloy product gives the best results.


For specific terms, conditions, warranty and availability, refer to Tribol Price List in effect at time of purchase.

See Reverse Side for Typical Properties

PDS 752-5 9/89

Tribol

21031 Ventura Boulevard, Woodland Hills, California 91364-2297  
Telephone (818) 888-0808 • Fax: (818) 884-1885

 A BURMAH CASTROL COMPANY

**Molub-Alloy**

### ALABAMA

Tribol  
4185 Billy Mitchell Road  
(P.O. Box 705)  
Addison, TX 75001-0705  
Phone: (800) 745-0125

### ALASKA

Tribol  
Meadow Creek Office Park  
22516 SE 64th Place, Suite 220  
Issaquah, Washington 98027  
Phone: (800) 328-1902  
Facsimile: (206) 391-8206

### ARIZONA

Tribol  
21031 Ventura Boulevard  
Suite 600  
Woodland Hills, California 91364  
Phone: (818) 888-9345  
(800) 622-1258  
Facsimile: (818) 884-1885

### ARKANSAS

Tribol  
4185 Billy Mitchell Road  
(P.O. Box 705)  
Addison, Texas 75001-0705  
Phone: (214) 387-4606  
Facsimile: (214) 386-4914

### CALIFORNIA

#### NORTHERN CALIF.

Tribol  
P.O. Box 5685  
So. San Francisco, California 94083  
Phone: (800) 622-1258  
Facsimile: (415) 572-9421

#### SOUTHERN CALIF.

Tribol  
21031 Ventura Boulevard,  
Suite 600  
Woodland Hills, California 91364  
Phone: (818) 888-9345  
(800) 622-1258  
Facsimile: (818) 884-1885

### RESEARCH & DEVELOPMENT LABORATORY

Tribol  
4845 West 147th Street  
Hawthorne, California 90250-6795  
Phone: (310) 679-0271  
Facsimile: (310) 679-0862

**Mailing Address:**  
4801 West 147th Street  
Hawthorne, California 90250-6791

### COLORADO

Tribol  
1581 North Derrick Drive  
(P.O. Box 2935)  
Casper, Wyoming 82602-2935  
Phone: (800) 228-6167  
(307) 473-1710  
Facsimile: (307) 473-1405

### CONNECTICUT

Tribol  
Hill Professional Park Office Bldg.  
115 Water Street  
Milford, Massachusetts 01757-3001  
Phone: (508) 478-7442  
Facsimile: (508) 478-7989

### DELAWARE

Tribol  
935 Horsham Road,  
Suite P  
Horsham,  
Pennsylvania 19044-1230  
Phone: (215) 675-3400  
Facsimile: (215) 675-3333

### DISTRICT OF COLUMBIA

Tribol  
101 Southpointe Drive  
Southpointe 79 Industrial Park  
Bridgeville, Pennsylvania 15017-1297  
Phone: (412) 257-1140  
Phone: (800) 786-2872  
Facsimile: (412) 221-1280

### FLORIDA

Tribol  
P.O. Box 705  
Addison, Texas 75001-0705  
Phone: (214) 387-4606  
Facsimile: (214) 386-4914

### GEORGIA

Tribol  
4185 Billy Mitchell Road  
(P.O. Box 705)  
Addison, TX 75001-0705  
Phone: (800) 745-0125

### HAWAII

Tribol  
95-095 Kawanu Street  
Mililani, Hawaii 96789-0097  
Phone: (808) 531-1466

### IDAHO

Tribol  
Meadow Creek Office Park  
22516 SE 64th Place, Suite 220  
Issaquah, Washington 98027  
Phone: (800) 328-1902  
Facsimile: (206) 391-8206

### ILLINOIS

Tribol  
1872 Brummei Drive  
Elk Grove Village,  
Illinois 60007-2121  
Phone: (708) 593-8270  
Facsimile: (708) 593-0109

### INDIANA

Tribol  
7659 Montgomery Road  
Cincinnati, Ohio 45236  
Phone: (513) 792-0610  
Facsimile: (513) 792-0614

### IOWA

Tribol  
700 Spirit of St. Louis Boulevard,  
Suite A  
Chesterfield, Missouri 63005  
Phone: (314) 532-1514  
Facsimile: (314) 532-2682

### KANSAS

Tribol  
8600 West Shawnee Mission Pkwy.  
Suite 306  
Merriam, Kansas 66202  
Phone: (913) 362-9590  
Facsimile: (913) 362-9693

### KENTUCKY

Tribol  
7659 Montgomery Road  
Cincinnati, Ohio 45236  
Phone: (513) 792-0610  
Facsimile: (513) 792-0614  
(800) 735-9101

### LOUISIANA

Tribol  
4185 Billy Mitchell Road  
(P.O. Box 705)  
Addison, TX 75001-0705  
Phone: (800) 745-0125

### MAINE

Tribol  
Hill Professional Park Office Bldg.  
115 Water Street  
Milford, Massachusetts 01757-3001  
Phone: (508) 478-7442  
Facsimile: (508) 478-7989

### MARYLAND

Tribol  
101 Southpointe Drive  
Southpointe 79 Industrial Park  
Bridgeville, Pennsylvania 15017-1297  
Phone: (412) 257-1140  
(800) 786-7822  
Facsimile: (412) 221-1280

### MASSACHUSETTS

Tribol  
Hill Professional Park Office Bldg.  
115 Water Street  
Milford, Massachusetts 01757-3001  
Phone: (508) 478-7442  
Facsimile: (508) 478-7989

### MICHIGAN

Tribol  
888 West Big Beaver  
Suite 313  
Troy, Michigan 48064  
Phone: (800) 829-4746  
Phone: (313) 362-0979  
Facsimile: (313) 362-1026

### MINNESOTA

Tribol  
4815 Burning Tree Road, Ste. 210  
Duluth, Minnesota 55811  
Phone: (218) 727-4440  
Phone: (800) 727-3434  
Facsimile: (218) 727-7051

### MISSISSIPPI

Tribol  
P.O. Box 705  
Addison, Texas 75001-0705  
Phone: (214) 387-4606  
Facsimile: (214) 386-4914

### MISSOURI

Tribol  
700 Spirit of St. Louis Boulevard,  
Suite A  
Chesterfield, Missouri 63005  
Phone: (314) 532-1514  
Facsimile: (314) 532-2682

### MONTANA

Tribol  
1581 North Derrick Drive  
(P.O. Box 2935)  
Casper, Wyoming 82602-2935  
Phone: (800) 228-6167  
(307) 473-1710  
Facsimile: (307) 473-1405

### NEBRASKA

Tribol  
700 Spirit of St. Louis Boulevard,  
Suite A  
Chesterfield, Missouri 63005  
Phone: (314) 532-1514  
Facsimile: (314) 532-2682

### NORTH CAROLINA

Tribol  
4185 Billy Mitchell Road  
(P.O. Box 705)  
Addison, TX 75001-0705  
Phone: (800) 745-0125

### NORTHERN NEVADA

Tribol  
1581 North Derrick Drive  
(P.O. Box 2935)  
Casper, Wyoming 82602-2935  
Phone: (800) 228-6167  
(307) 473-1710  
Facsimile: (307) 473-1405

### SOUTHERN NEVADA

Tribol  
21031 Ventura Boulevard,  
Suite 600  
Woodland Hills, California 91364  
Phone: (818) 888-9345  
Facsimile: (818) 884-1885

### NEW HAMPSHIRE

Tribol  
Hill Professional Park Office Bldg.  
115 Water Street  
Milford, Massachusetts 01757-3001  
Phone: (508) 478-7442  
Facsimile: (508) 478-7989

### NEW JERSEY

Tribol  
935 Horsham Road,  
Suite P  
Horsham,  
Pennsylvania 19044-1230  
Phone: (215) 675-3400  
Facsimile: (215) 675-3333

### NEW MEXICO

Tribol  
P.O. Box 705  
Addison, Texas 75001-0705  
Phone: (214) 387-4606  
Facsimile: (214) 386-4914

### NEW YORK (EASTERN)

Tribol  
Hill Professional Park Office Bldg.  
115 Water Street  
Milford, Massachusetts 01757-3001  
Phone: (508) 478-7442  
Facsimile: (508) 478-7989

### METRO NEW YORK

Tribol  
935 Horsham Road,  
Suite P  
Horsham,  
Pennsylvania 19044-1230  
Phone: (215) 675-3400  
Facsimile: (215) 675-3333

### NEW YORK (WESTERN)

Tribol  
101 Southpointe Drive  
Bridgeville,  
Pennsylvania 15017-1297  
Phone: (412) 257-1140  
(800) 626-5823  
Facsimile: (412) 221-1280

### NORTH DAKOTA

Tribol  
P.O. Box 636  
Bismarck,  
North Dakota 58502-0636  
Phone: (701) 223-5523  
Facsimile: (701) 223-9632

### OHIO

Tribol  
7659 Montgomery Road  
Cincinnati, Ohio 45236  
Phone: (513) 792-0610  
(800) 735-9101  
Facsimile: (513) 792-0614

### OKLAHOMA

Tribol  
P.O. Box 705  
Addison, Texas 75001-0705  
Phone: (214) 387-4606  
Facsimile: (214) 386-4914

### OREGON

Tribol  
Meadow Creek Office Park  
22516 SE 64th Place, Suite 220  
Issaquah, Washington 98027  
Phone: (800) 328-1902  
Facsimile: (206) 391-8206

### PENNSYLVANIA (EASTERN)

Tribol  
935 Horsham Road,  
Suite P  
Horsham,  
Pennsylvania 19044-1230  
Phone: (215) 675-3400  
Facsimile: (215) 675-3333

### PENNSYLVANIA (WESTERN)

Tribol  
101 Southpointe Drive  
Bridgeville,  
Pennsylvania 15017-1297  
Phone: (412) 257-1140  
(800) 786-2872  
Facsimile: (412) 221-1280

### RHODE ISLAND

Tribol  
Hill Professional Park Office Bldg.  
115 Water Street  
Milford, Massachusetts 01757-3001  
Phone: (508) 478-7442  
Facsimile: (508) 478-7989

### SOUTH CAROLINA

Tribol  
4185 Billy Mitchell Road  
(P.O. Box 705)  
Addison, TX 75001-0705  
Phone: (800) 745-0125

### SOUTH DAKOTA

Tribol  
1872 Brummel Drive  
Elk Grove Village,  
Illinois 60007-2121  
Phone: (708) 593-8270  
Facsimile: (708) 593-0109

### TENNESSEE

Tribol  
4185 Billy Mitchell Road  
(P.O. Box 705)  
Addison, Texas 75001-0705  
Phone: (214) 387-4606  
Facsimile: (214) 386-4914

### TEXAS

#### DALLAS

Tribol  
4185 Billy Mitchell Road  
(P.O. Box 705)  
Addison, Texas 75001-0705  
Phone: (214) 387-4606  
Facsimile: (214) 386-4914

#### HOUSTON

4185 Billy Mitchell Road  
(P.O. Box 705)  
Addison, Texas 75001-0705  
Phone: (214) 387-4606  
Facsimile: (214) 386-4914

#### UTAH

Tribol  
1581 North Derrick Drive  
(P.O. Box 2935)  
Casper, Wyoming 82602-2935  
Phone: (800) 228-6167  
(307) 473-1710  
Facsimile: (307) 473-1405

#### VERMONT

Tribol  
Hill Professional Park Office Bldg.  
115 Water Street  
Milford, Massachusetts 01757-3001  
Phone: (508) 478-7442  
Facsimile: (508) 478-7989

#### VIRGINIA

Tribol  
101 Southpointe Drive  
Southpointe 79 Industrial Park  
Bridgeville, Pennsylvania 15017-1297  
Phone: (412) 257-1140  
(800) 786-7822  
Facsimile: (412) 221-1280

#### WASHINGTON

Tribol  
Meadow Creek Office Park  
22516 SE 64th Place, Suite 220  
Issaquah, Washington 98027  
Phone: (800) 328-1902  
Facsimile: (206) 391-8206

### WEST VIRGINIA

Tribol  
101 Southpointe Drive  
Southpointe 79 Industrial Park  
Bridgeville,  
Pennsylvania 15017-1297  
Phone: (412) 257-1140  
(800) 786-2872  
Facsimile: (412) 221-1280

### WISCONSIN

Tribol  
1872 Brummel Drive  
Elk Grove Village,  
Illinois 60007-2121  
Phone: (708) 593-8270  
Facsimile: (708) 593-0109

### WYOMING

Tribol  
1581 North Derrick Drive  
(P.O. Box 2935)  
Casper, Wyoming 82602-2935  
Phone: (800) 228-6167  
(307) 473-1710  
Facsimile: (307) 473-1405

### CANADA

#### EASTERN

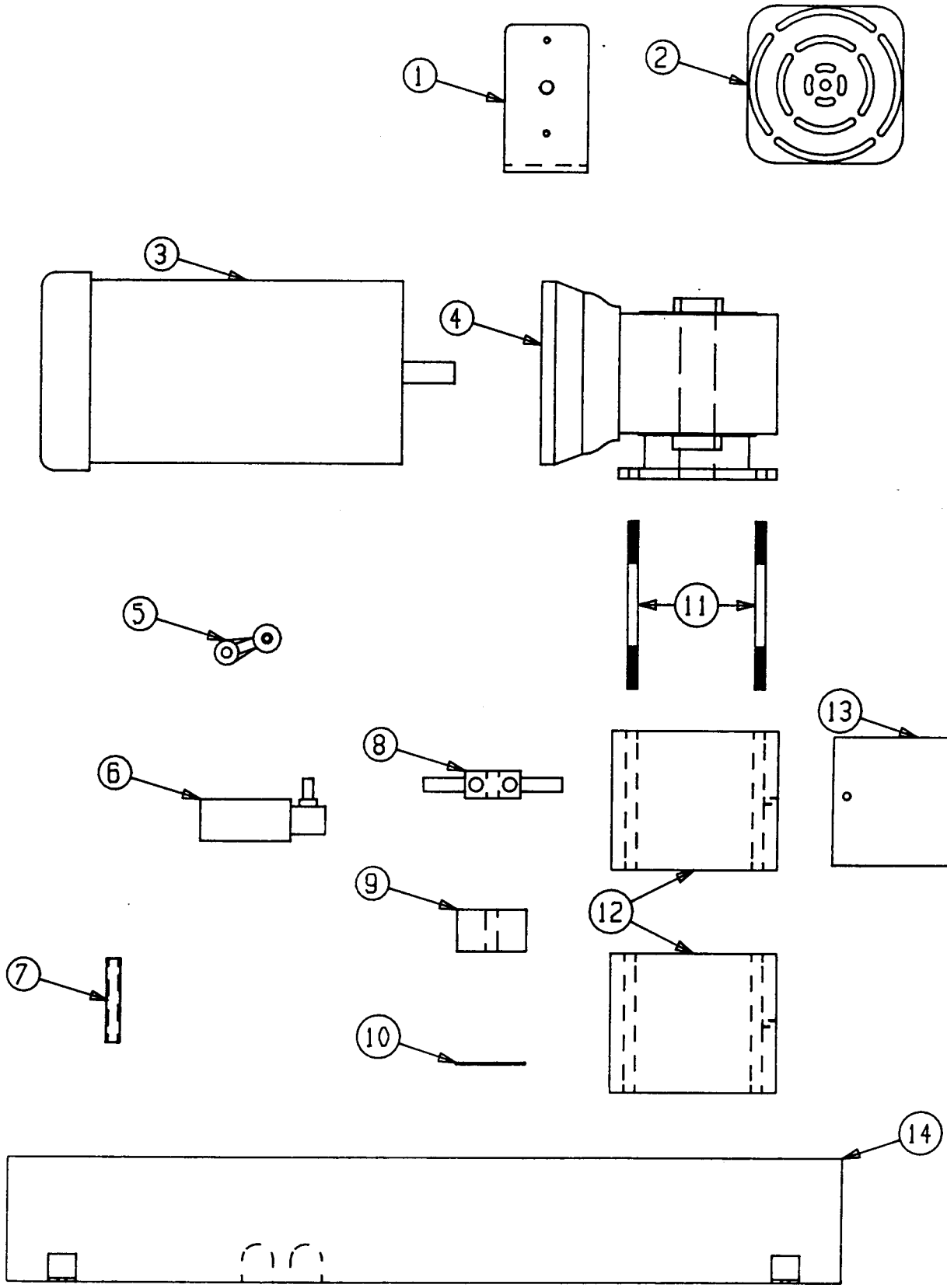
Tribol Inc.  
409 King Street West, Suite 404  
Toronto, Ontario, Canada M5V 1K1  
Phone: (416) 595-5510  
Facsimile: (416) 595-8236

#### WESTERN

Tribol Inc.  
14627-128th Avenue  
Edmonton, Alberta Canada T5L3H3  
Phone: (403) 452-9908  
Facsimile: (403) 451-3340

# GROUP 289

## SECTION 201



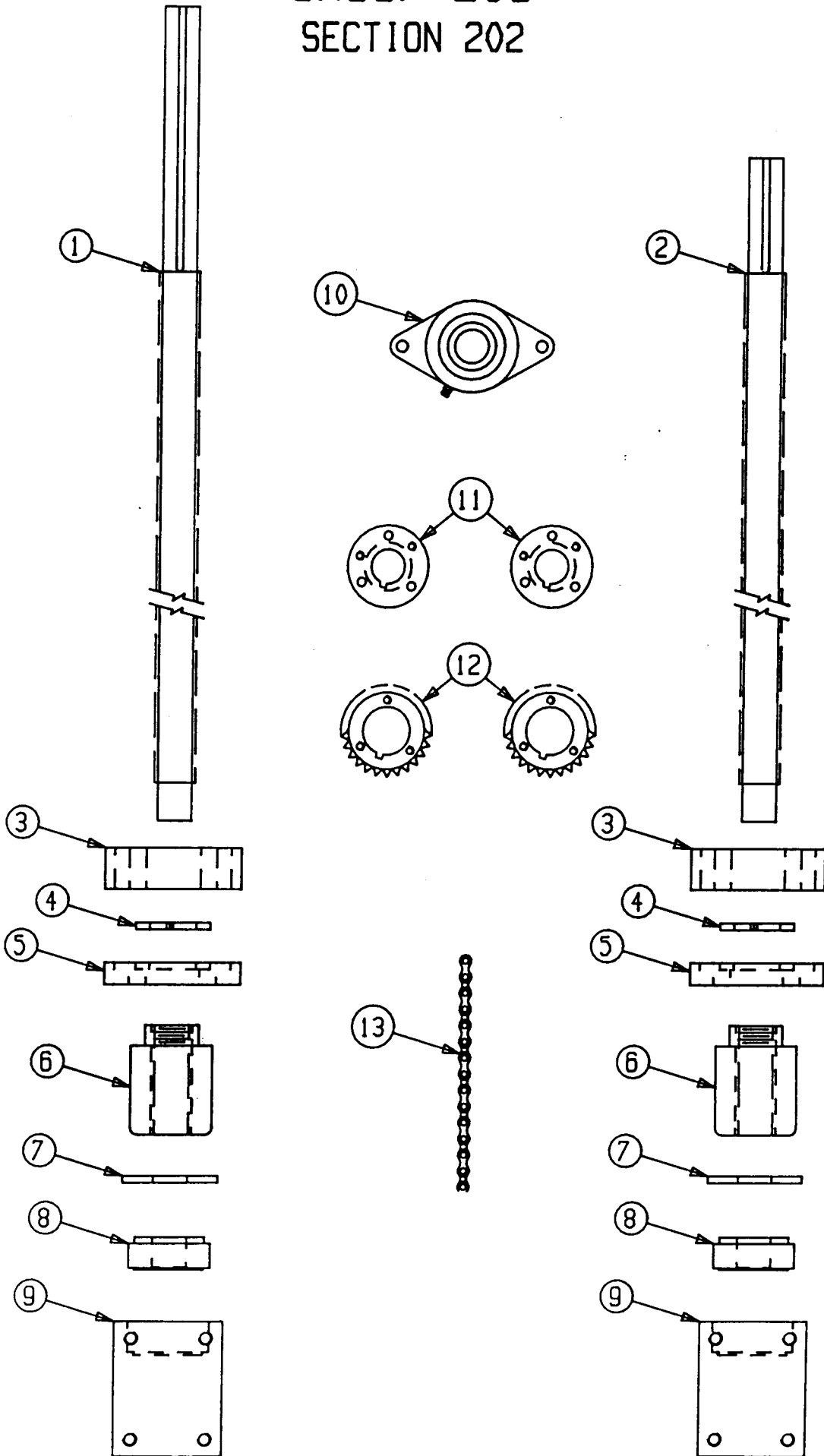
RS-44  
GROUP 289  
SECTION 201

<u>ITEM</u>	<u>PART NUMBER</u>	<u>PART DESCRIPTION</u>	<u>QTY.</u>
1	70-00-0289-0201-01	HORN BRACKET	1
2	70-00-0289-0201-02	SURFACE HORN	1
3	70-00-0289-0201-03	VERTICAL TRAVEL MOTOR, SPECIFY VOLTAGE	1
4	70-00-0289-0201-04	VERTICAL TRAVEL SPEED REDUCER	3
5	00-01-0289-0201-05	LIMIT SWITCH ROLLER LEVER	1
6	00-01-0289-0201-06	LIMIT SWITCH, LEVER TYPE	1
7	70-00-0289-0201-07	VERTICAL TRAVEL LIMIT SWITCH SPACER	1
8	70-00-0289-0201-08	CHAIN TENSIONER	1
9	70-00-0289-0201-09	CHAIN TENSIONER SPACER	1
10	70-00-0289-0201-10	CHAIN TENSIONER SPACER SHIM	1
11	70-00-0289-0201-11	SQUARE SHANK STUD	4
12	70-00-0289-0201-12	UPPER GEAR MOTOR SPACER	2
13	70-00-0289-0201-13	TOP CHAIN GUARD END	1
14	70-00-0289-0201-14	TOP CHAIN GUARD	1



# GROUP 289

## SECTION 202

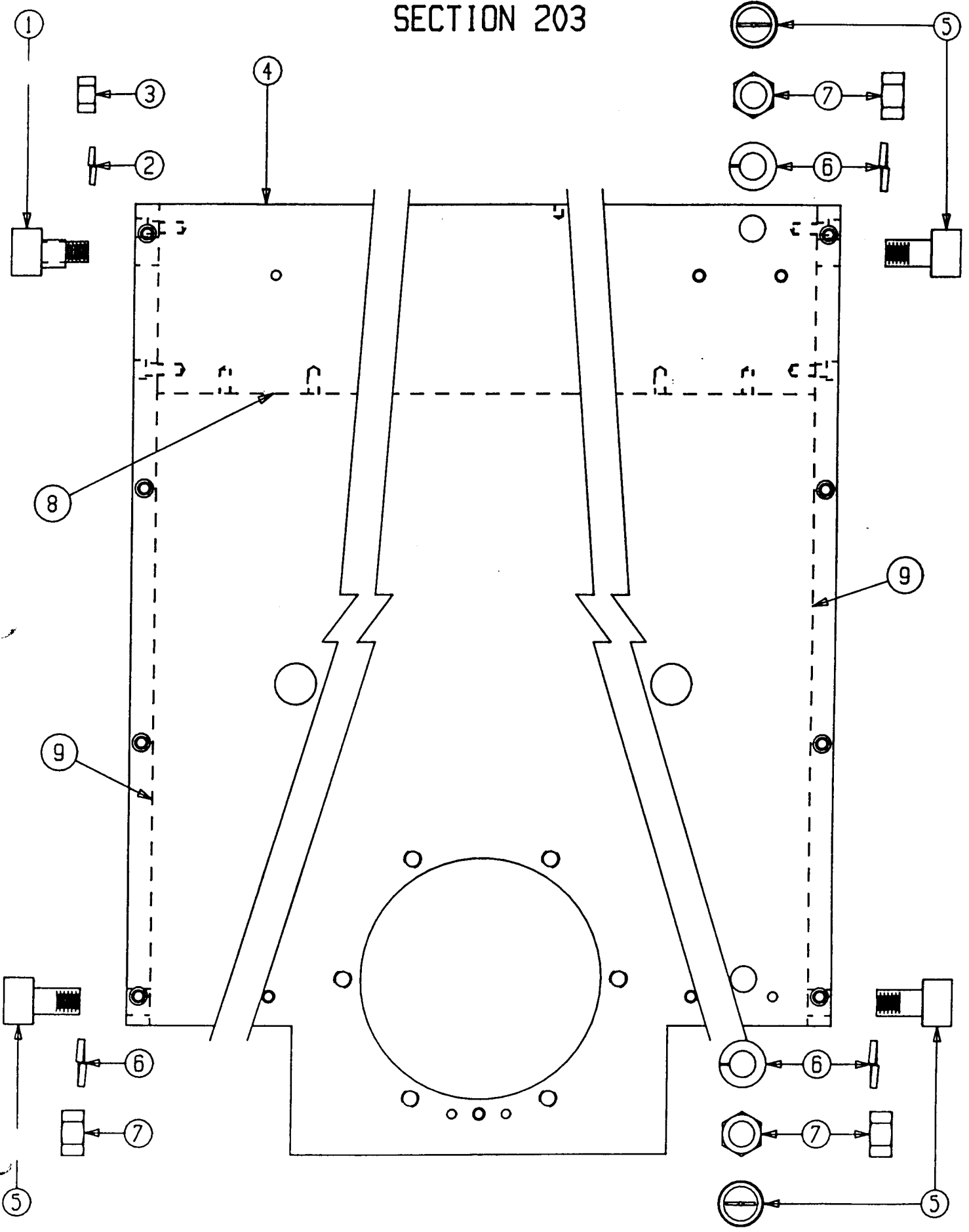


RS-44  
GROUP 289  
SECTION 202

<u>ITEM</u>	<u>PART NUMBER</u>	<u>PART DESCRIPTION</u>	<u>QTY.</u>
1	70-00-0289-0202-01	DRIVE BALL SCREW	1
2	70-00-0289-0202-02	DRIVEN BALL SCREW	1
3	70-00-0289-0202-03	BALL NUT MOUNTING PLATE	2
4	70-00-0289-0202-04	WIPER KIT	2
5	70-00-0289-0202-05	FLANGE	2
6	70-00-0289-0202-06	BALL NUT	2
7	70-00-0289-0202-07	LOWER BEARING DIRT GUARD	2
8	70-00-0289-0202-08	BEARING CUP AND CONE	2
9	70-00-0289-0202-09	LOWER BEARING MOUNTING PLATE	2
10	00-01-0289-0202-10	TWO BOLT FLANGE BEARING	1
11	70-00-0289-0202-11	TAPER LOCK BUSHING	2
12	70-00-0289-0202-12	SPROCKET	2
13	00-01-0289-0202-13	ROLLER CHAIN	1

# GROUP 289

## SECTION 203

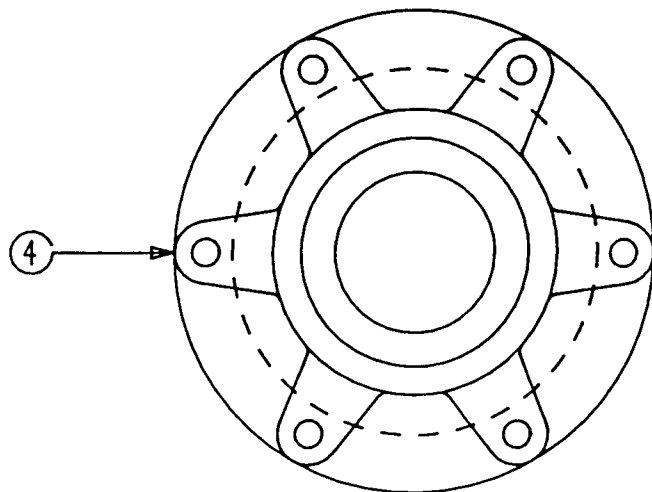
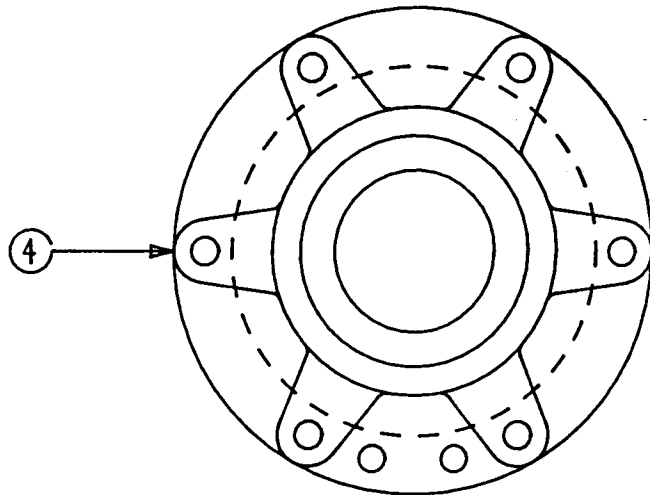
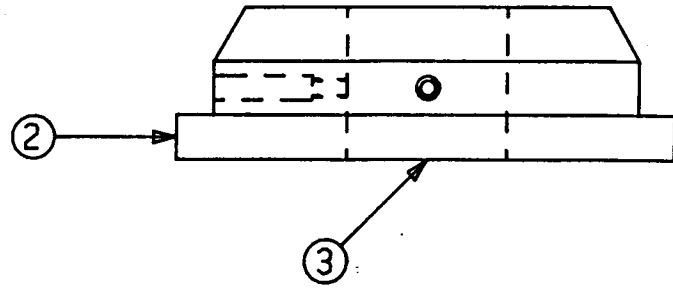
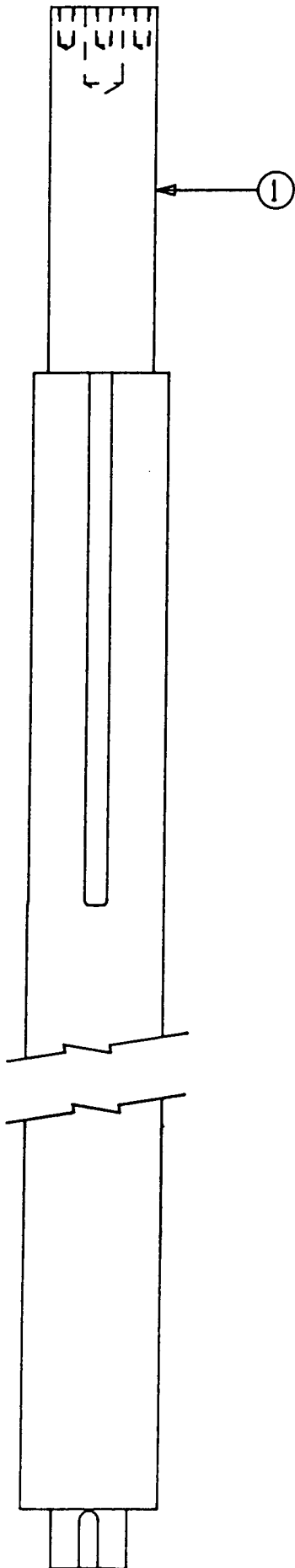


RS-44  
GROUP 289  
SECTION 203

<u>ITEM</u>	<u>PART NUMBER</u>	<u>PART DESCRIPTION</u>	<u>QTY.</u>
1	00-01-0289-0203-01	CAM FOLLOWER	1
2	SLW00-087-00-0000-P	SPLIT LOCK WASHER	1
3	HJN00-087-14-0000-P	HEX JAM NUT	1
4	70-00-0289-0203-04	INNER BEARING PLATE	2
5	70-00-0289-0203-05	CAM FOLLOWER	5
6	SLW00-112-00-0000-P	SPLIT LOCK WASHER	5
7	HJN00-112-12-0000-P	HEX JAM NUT	5
8	70-00-0289-0203-08	BALL NUT SUPPORT GUSSET	2
9	70-00-0289-0203-09	CAM ROLLER PLATE	2

# GROUP 289

## SECTION 204

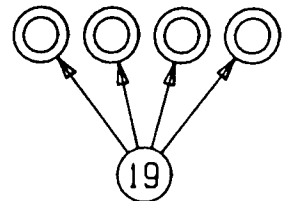
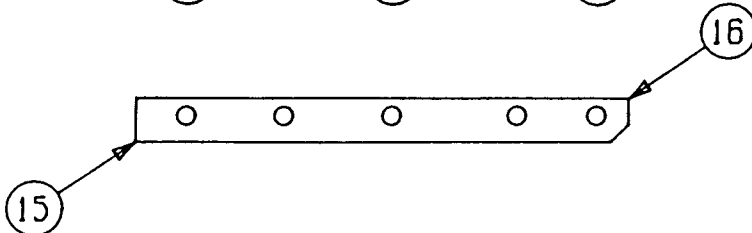
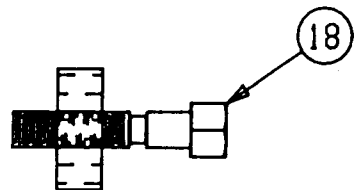
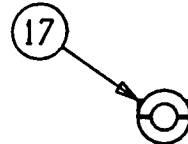
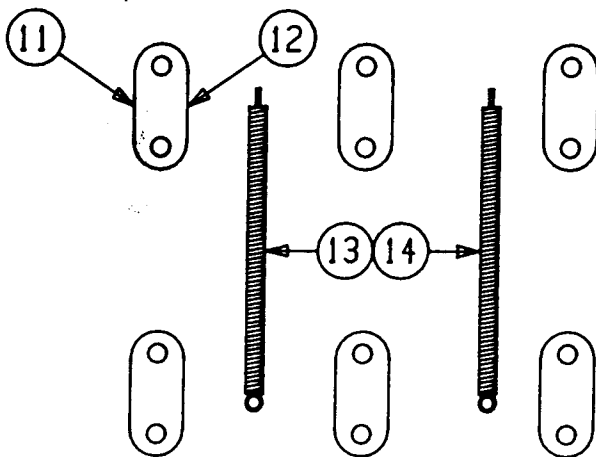
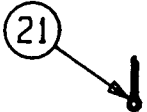
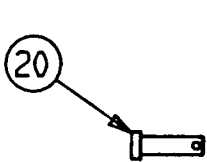
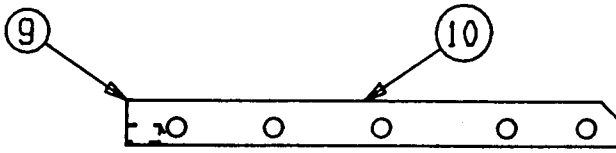
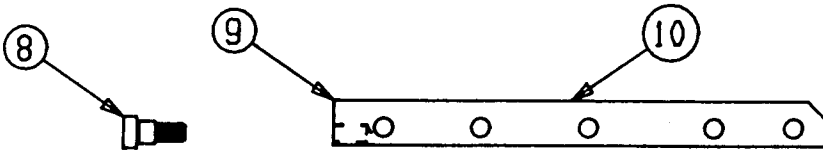
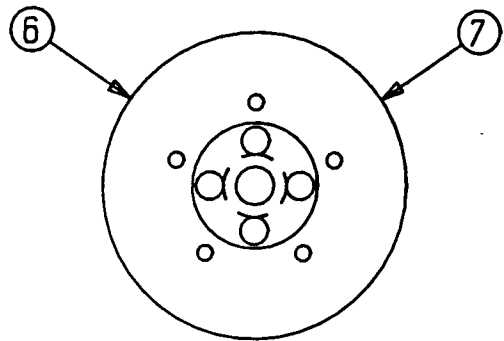
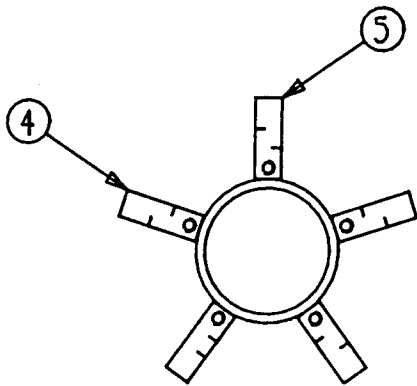
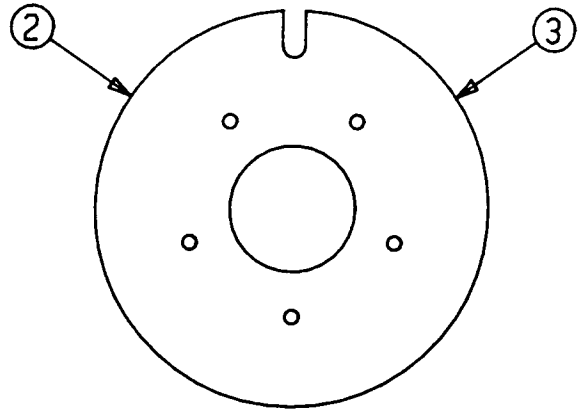
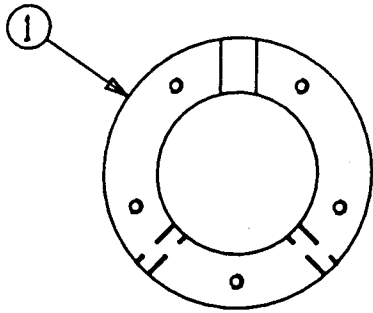


RS-44  
GROUP 289  
SECTION 204

<u>ITEM</u>	<u>PART NUMBER</u>	<u>PART DESCRIPTION</u>	<u>QTY.</u>
1	70-00-0289-0204-01	BRAKE SHAFT	1
2	70-00-0289-0204-02	BRAKE SHAFT CORE INSERT, 12" CORE	1
3	70-00-0289-0204-03	BRAKE SHAFT CORE INSERT, 8" CORE	1
4	70-00-0289-0204-04	PILOTED FLANGE BEARING, MODIFIED	2

# GROUP 289

## SECTION 205



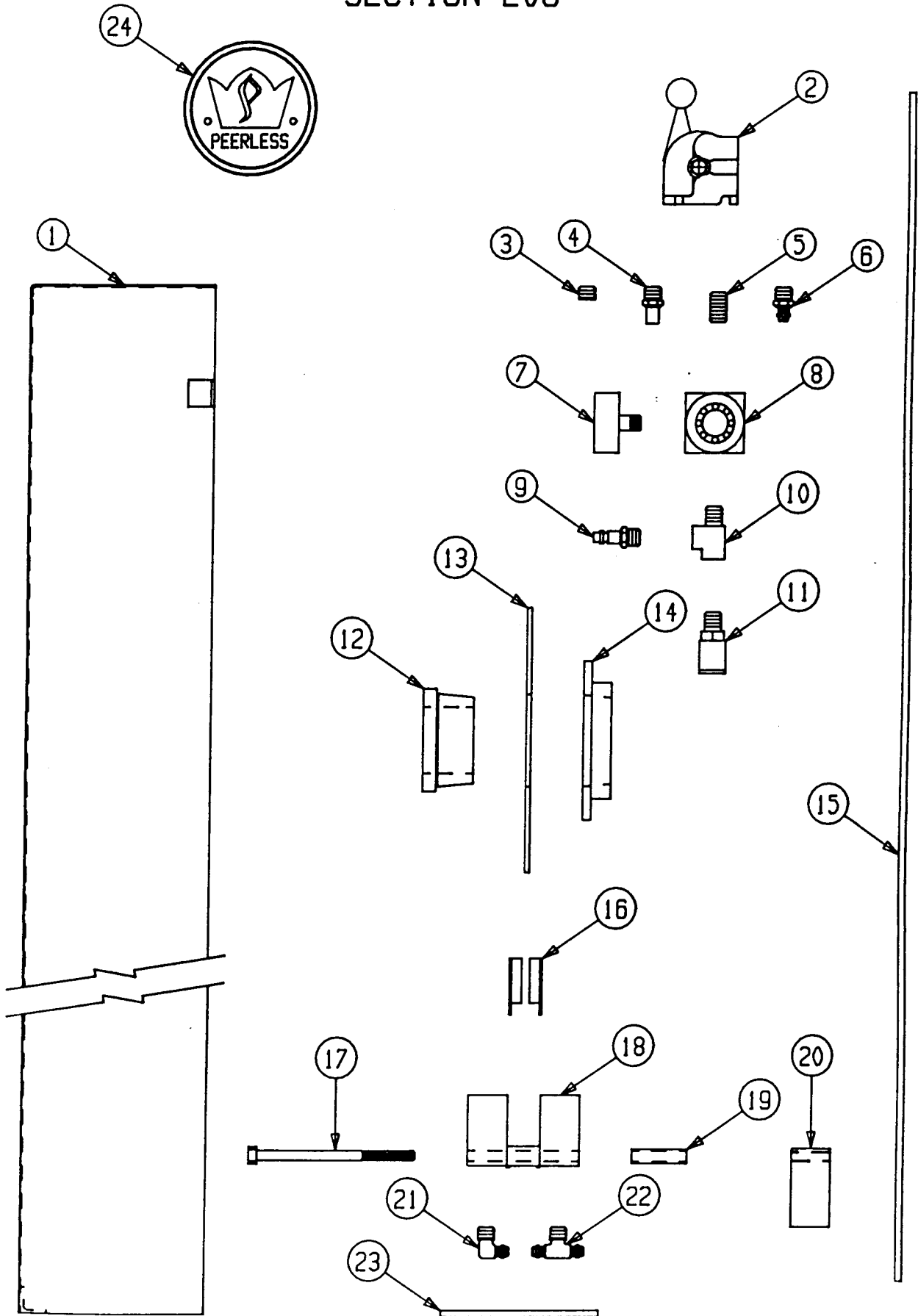
RS-44  
GROUP 289  
SECTION 205

ITEM	PART NUMBER	PART DESCRIPTION	QTY.
1	70-00-0289-0205-01	EXPANDABLE CORE RETAINER RING	1
2	70-00-0289-0205-02A	BACKING PLATE, 12" CORE	1
3	70-00-0289-0205-03	BACKING PLATE, 8" CORE	1
4	70-00-0289-0205-04	INNER ASSEMBLY, 12" CORE	1
5	70-00-0289-0205-05	INNER ASSEMBLY, 8" CORE	1
6	70-00-0289-0205-06A	RETAINER PLATE, 12" CORE	1
7	70-00-0289-0205-07	RETAINER PLATE, 8" CORE	1
8	SHSCS-062-00-0050-P	SOCKET HEAD SHOULDER CAP SCREW	1
9	70-00-0289-0205-09	OUTER MEMBER WITH TAPPED HOLE, 12" CORE	1
10	70-00-0289- <sup>0205?</sup> 0250-10	OUTER MEMBER WITH TAPPED HOLE, 8" CORE	1
11	70-00-0289-0205-11	CONNECTING LINK, 12" CORE	30
12	70-00-0289-0205-12	CONNECTING LINK, 8" CORE	30
13	70-00-0289-0205-13	EXTENSION SPRING, 12" CORE	2
14	70-00-0289-0205-14	EXTENSION SPRING, 8" CORE	2
15	70-00-0289-0205-15	OUTER MEMBER WITHOUT TAPPED HOLE, 12" CORE	4
16	70-0289-0205-16	OUTER MEMBER WITHOUT TAPPED HOLE, 8" CORE	4
17	00-01-0289-0205-17	SPLIT COLLAR	1
18	70-00-0289-0205-18	BOLT AND NUT - MATCHED SET	1
19	70-00-0289-0205-19	HARDENED THRUST WASHER	4
20	70-00-0289-0205-20	CLEVIS PIN, 8" CORE	30
21	CPIN0-015-00-0100-2	COTTER PIN, 8" CORE	30



# GROUP 289

## SECTION 206

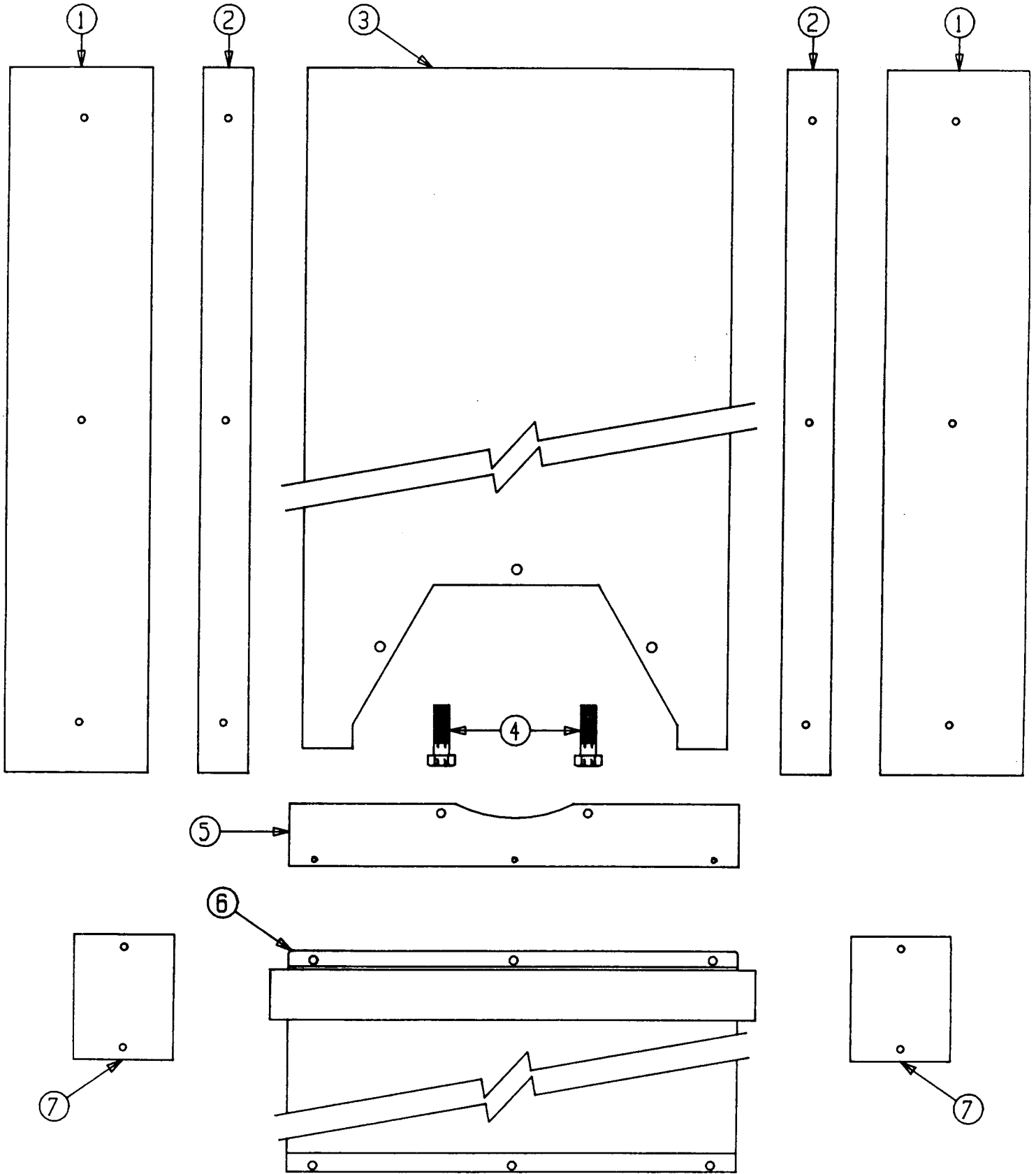


RS-44  
GROUP 289  
SECTION 206

ITEM	PART NUMBER	PART DESCRIPTION	QTY.
----	-----	-----	----
1	70-00-0289-0206-01	BACK FRAME BEARING GUARD	1
2	00-01-1700-1706-01	FOUR WAY AIR VALVE	1
3	PFPIPEPLG-1703-400	SOCKET PIPE PLUG	1
4	00-01-1700-1706-03	AIR MUFFLER	1
5	PFCLNIP00-1703-4-4	PIPE NIPPLE	1
6	PTMCONN00-1702-4-4B	MALE CONNECTOR	1
7	00-01-1700-1706-07	AIR PRESSURE GAUGE	1
8	00-01-1700-1706-08	AIR PRESSURE REGULATOR	1
9	QDNPT0H2C-1700-4-4	QUICK DISCONNECT NIPPLE	1
10	PFSTTEE00-1703-400B	STREET TEE	1
11	QDCPT0B22-1700-4-4	QUICK DISCONNECT COUPLING	1
12	70-00-0289-0206-12	TAPER LOCK BUSHING	1
13	00-01-0289-0206-13	BRAKE DISC	1
14	00-01-0289-0206-14	DISC BRAKE HUB	1
15	POLYTUBE0-1702-400	POLYETHYLENE TUBING	1
16	00-01-0289-0206-16	BRAKE PAD SET	1
17	HHCS0-037-16-0800-5	HEX HEAD CAP SCREW	2
18	00-01-0289-0206-18	BRAKE CALIPER	1
19	70-00-0289-0206-19	BRAKE SPACER	2
20	70-00-0289-0206-20	LIMIT SWITCH STRIKER	1
21	PTM90L000-1702-4-4B	MALE ELBOW	1
22	PTMBRCHT0-1702-4-4B	MALE BRANCH TEE	1
23	POLYTUBE0-1702-400	POLYETHYLENE TUBING	1
24	00-01-0289-0206-24	PEERLESS EMBLEM	1

# GROUP 289

## SECTION 207

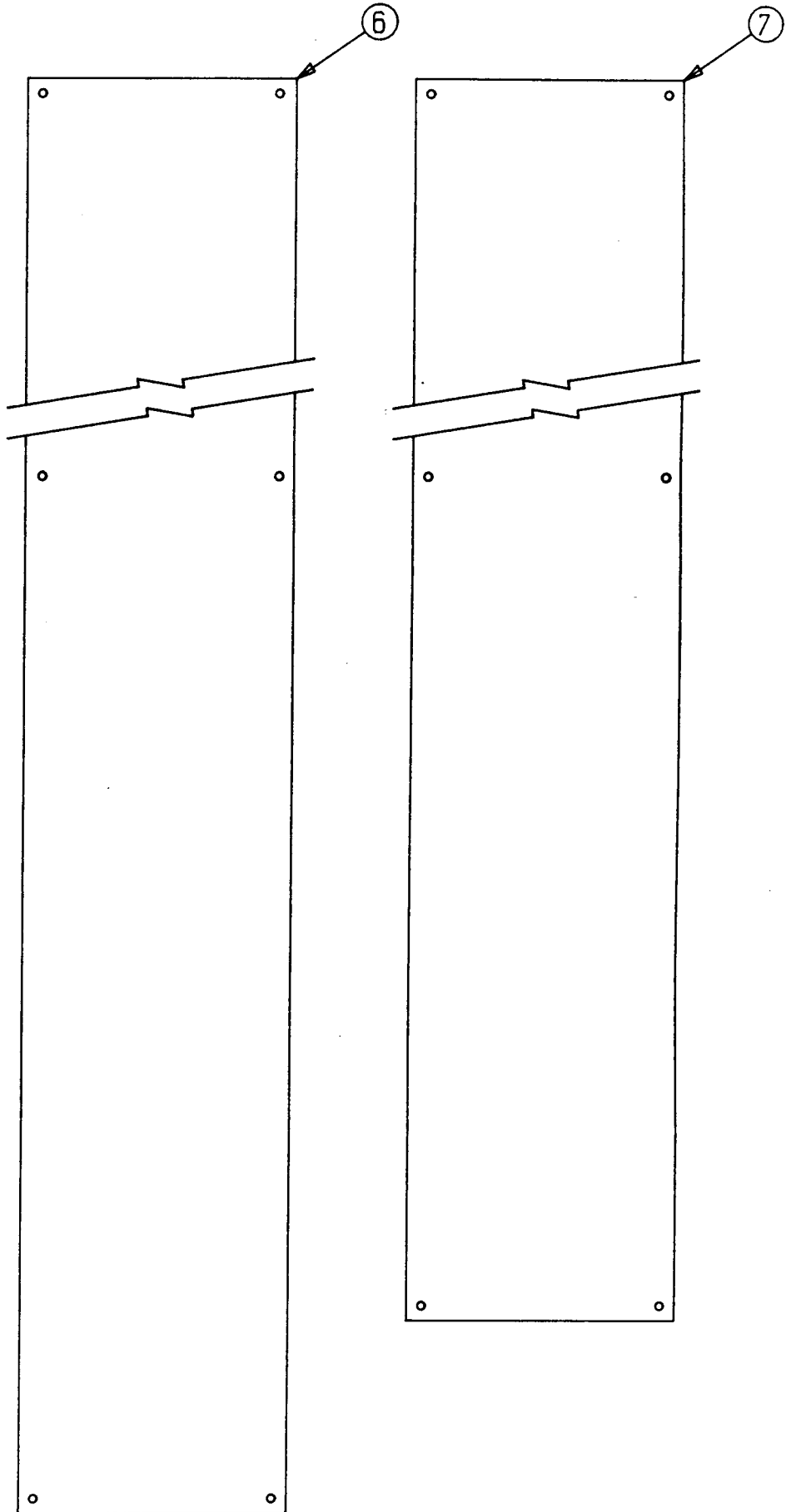
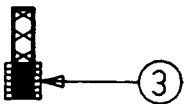
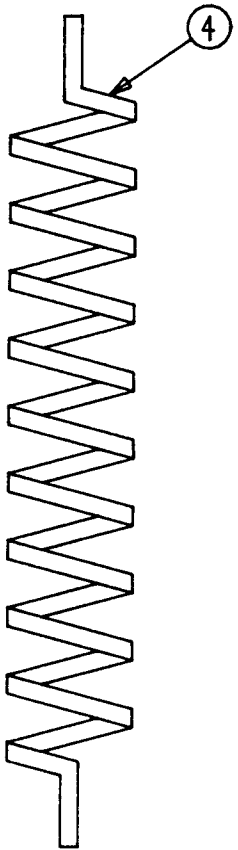
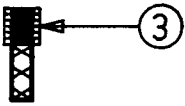
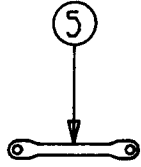
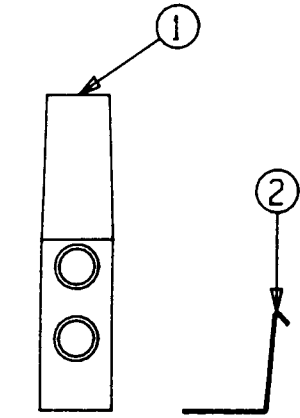


RS-44  
GROUP 289  
SECTION 207

<u>ITEM</u>	<u>PART NUMBER</u>	<u>PART DESCRIPTION</u>	<u>QTY.</u>
1	70-00-0289-0207-01	UPPER-OUTER GUARD, ROLL SIDE	2
2	70-00-0289-0207-02	UPPER-MIDDLE GUARD, ROLL SIDE	2
3	70-00-0289-0207-03	UPPER-CENTER GUARD, ROLL SIDE	1
4	70-00-0289-0207004	HEX HEAD CAP SCREW, MODIFIED	2
5	70-00-0289-0207-05	BEARING CANISTER MOUNT	1
6	70-00-0289-0206-06	CANISTER TYPE COLUMN COVER	1
7	70-00-0289-0207-07	BALL SCREW ALIGNMENT HOLE GUARD	2

# GROUP 289

## SECTION 208

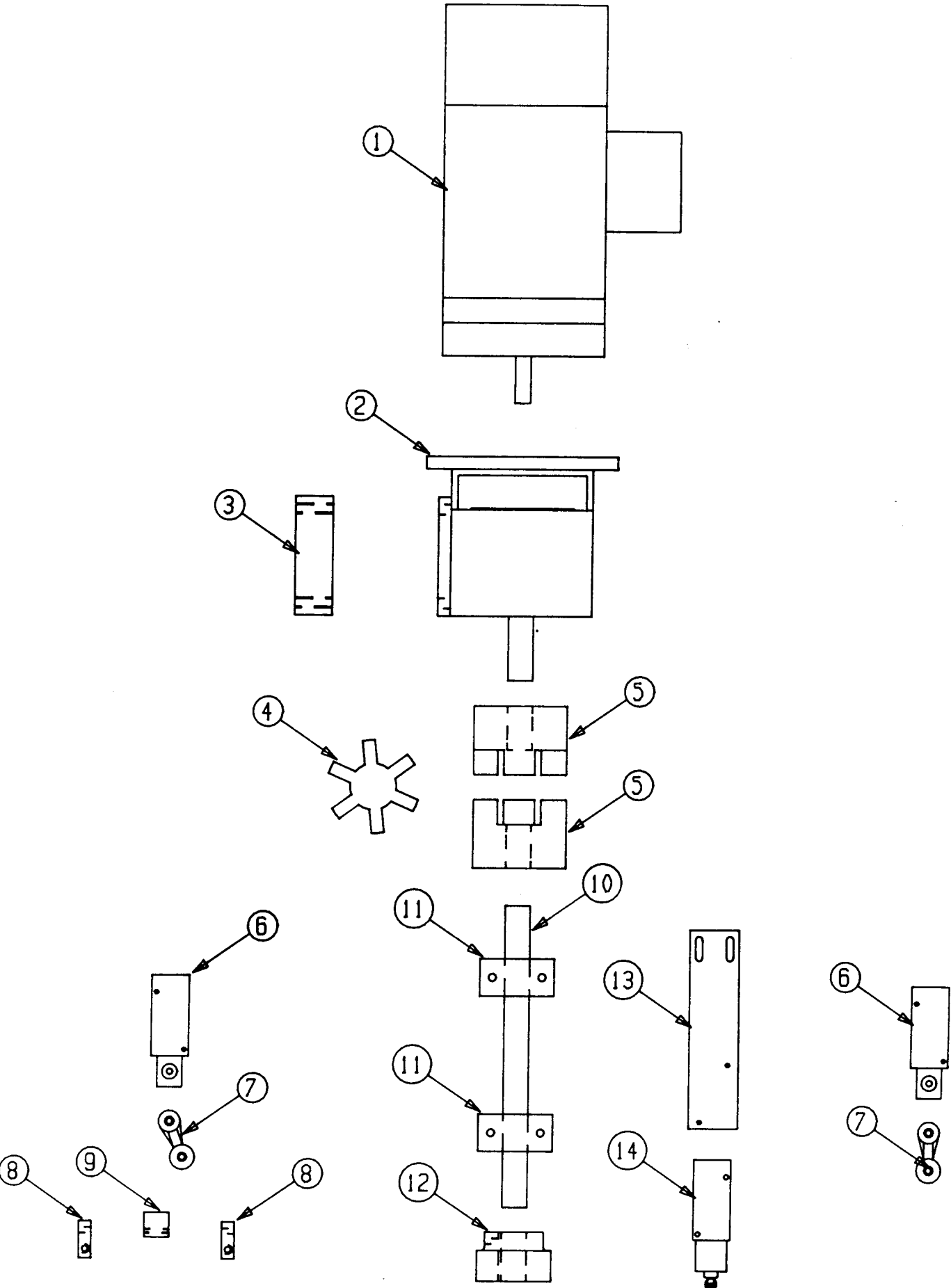


RS-44  
GROUP 289  
SECTION 208

<u>ITEM</u>	<u>PART NUMBER</u>	<u>PART DESCRIPTION</u>	<u>QTY.</u>
1	70-00-0289-0208-01	PUSH BUTTON UNIT	1
2	70-00-0289-0208-02	HANDLE ATTACHMENT	1
3	70-00-0289-0208-03	CORD GRIP	2
4	70-00-0289-0208-04	COILED CORD	1
5	00-01-0289-0208-05	HANGER BRACKET	1
6	70-00-0289-0208-06	OPERATOR SIDE GUARD	1
7	70-00-0289-0208-07	UPPER RACK SIDE GUARD	1

# GROUP 289

## SECTION 209



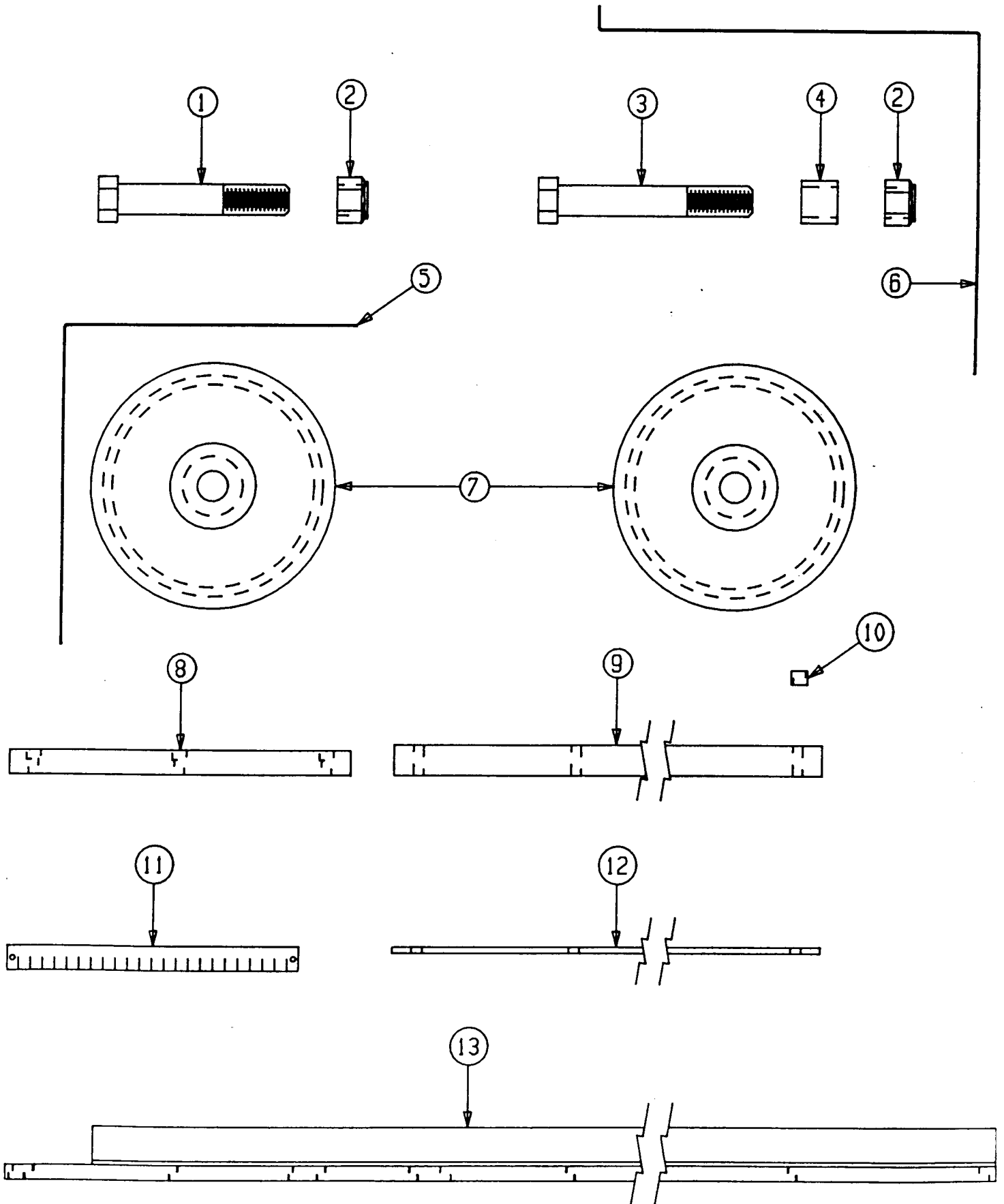
RS-44  
GROUP 289  
SECTION 209

<u>ITEM</u>	<u>PART NUMBER</u>	<u>PART DESCRIPTION</u>	<u>QTY.</u>
1	70-00-0289-0209-01	HORIZONTAL TRAVEL MOTOR, SPECIFY VOLTAGE	1
2	70-00-0289-0209-02	HORIZONTAL TRAVEL SPEED REDUCER	1
3	70-00-0289-0209-03	LOWER GEAR MOTOR SPACER	2
4	70-00-0289-0209-04	COUPLING SPIDER	1
5	70-00-0289-0209-05	COUPLING HALF	2
6	00-01-0289-0201-06	LIMIT SWITCH, LEVER TYPE	2
7	00-01-0289-0201-05	LIMIT SWITCH ROLLER LEVER	2
8	70-00-0289-0209-08	CLAMP	2
9	70-00-0289-0209-09	LIMIT SWITCH STRIKER	1
10	70-00-0289-0209-10	GEAR RACK SHAFT	1
11	70-00-0289-0209-11	PILLOW BLOCK BEARING	2
12	70-00-0289-0209-12	GEAR	1
13	70-00-0289-0209-13	LIMIT SWITCH MOUNTING BRACKET	1
14	70-00-0289-0209-14	LIMIT SWITCH, PLUNGER TYPE	1



# GROUP 289

## SECTION 210

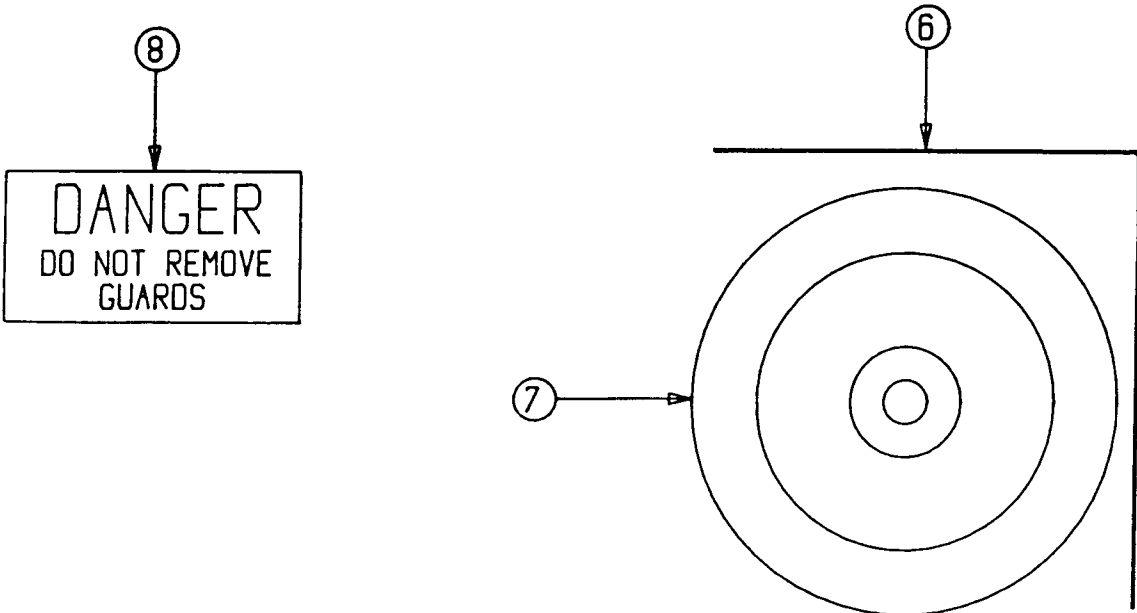
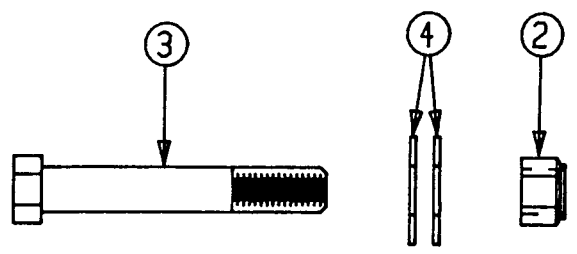
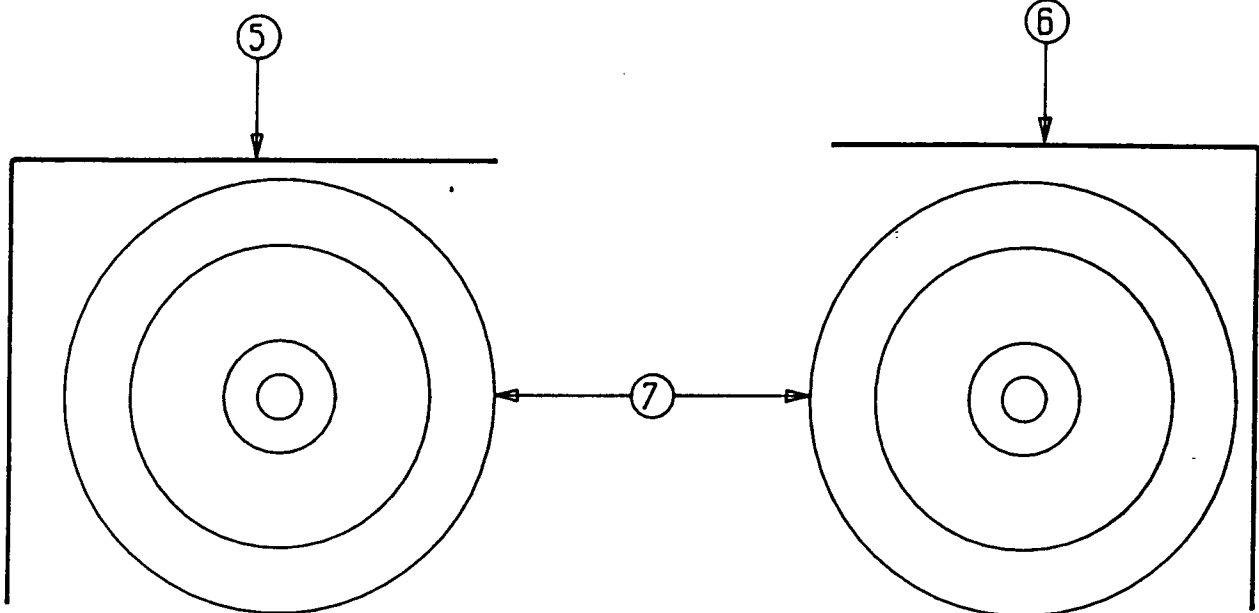
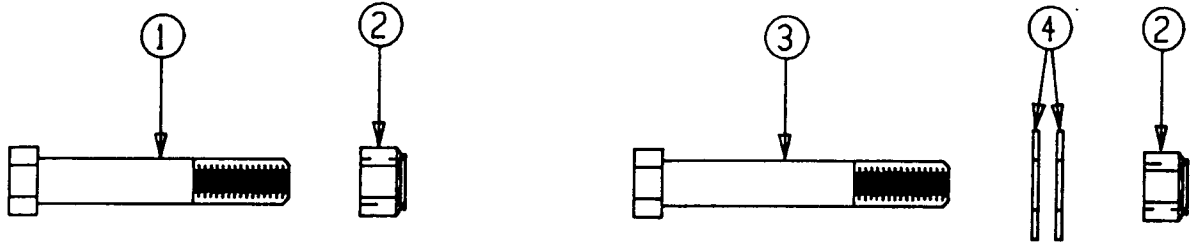


RS-44  
GROUP 289  
SECTION 210

<u>ITEM</u>	<u>PART NUMBER</u>	<u>PART DESCRIPTION</u>	<u>QTY.</u>
1	HHCS0-125-07-0700-8	HEX HEAD CAP SCREW	1
2	NILN0-125-07-0000-2	NYLON INSERT LOCK NUT	2
3	HHCS0-125-07-0800-8	HEX HEAD CAP SCREW	1
4	70-00-0289-0210-04	SLEEVE BUSHING	1
5	70-00-0289-0210-05	V-GROOVED REAR WHEEL DRIVE SIDE GUARD	1
6	70-00-0289-0210-06	LOWER RACK SIDE GUARD	1
7	70-00-0289-0210-07	V-GROOVED WHEEL	2
8	70-00-0289-0210-08	LIMIT SWITCH ADJUSTMENT RAIL	1
9	70-00-0289-0210-09	GEAR RACK	1
10	70-00-0289-0210-10	LIMIT SWITCH BOLT SPACER	1
11	70-00-0289-0210-11	LIMIT SWITCH SCALE	1
12	70-00-0289-0210-12	GEAR RACK SPACER	1
13	70-00-0289-0210-13	FLOOR PLATE AND TRACK	1

# GROUP 289

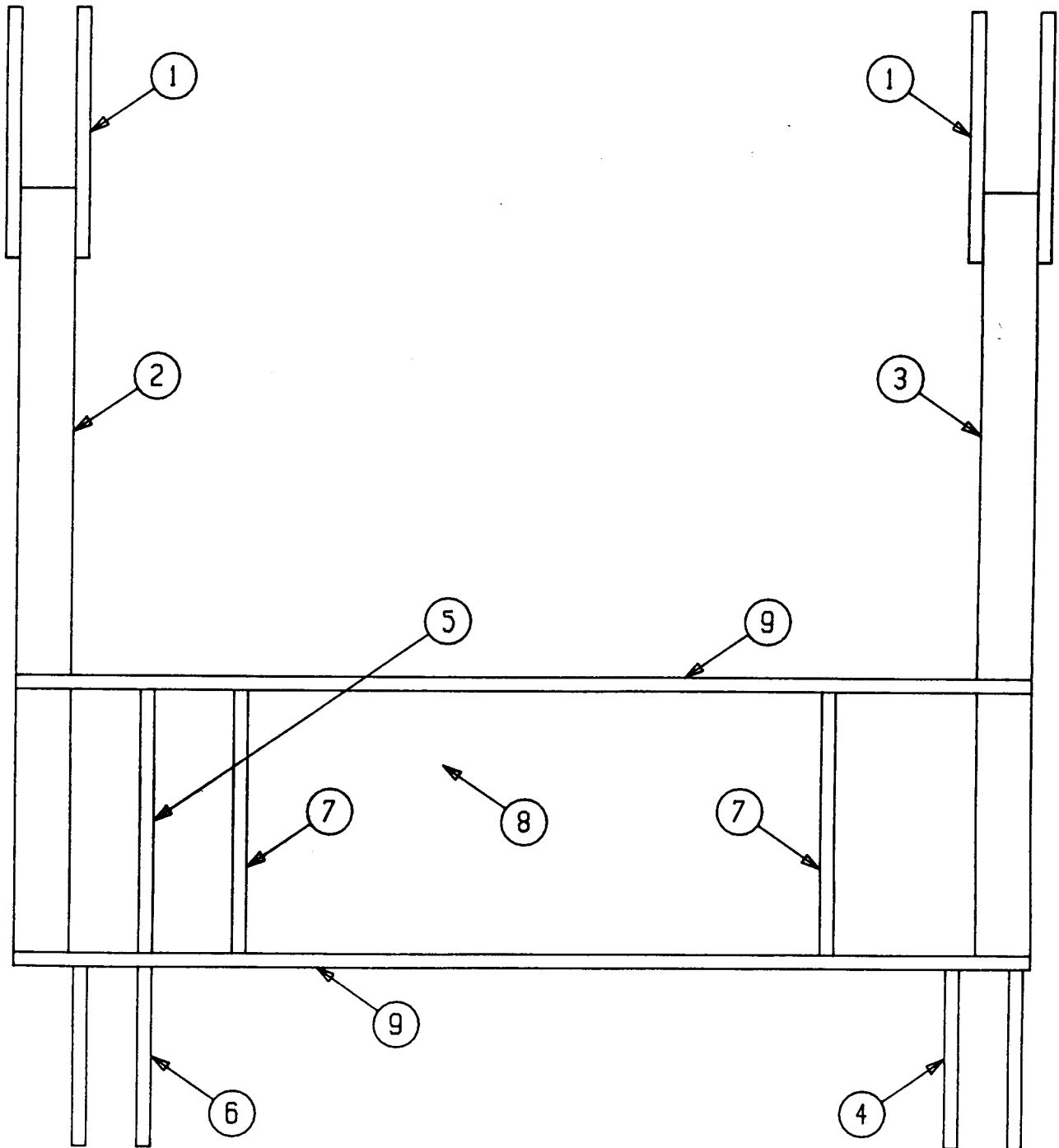
## SECTION 211



RS-44  
GROUP 289  
SECTION 211

<u>ITEM</u>	<u>PART NUMBER</u>	<u>PART DESCRIPTION</u>	<u>QTY.</u>
1	HHCS0-125-07-0700-8	HEX HEAD CAP SCREW	1
2	NILN0-125-07-0000-2	NYLON INSERT LOCK NUT	3
3	HHCS0-125-07-0800-8	HEX HEAD CAP SCREW	2
4	FWSAE-125-00-0000-2	FLAT WASHER	4
5	70-00-0289-0211-05	REAR WHEEL OPPOSITE DRIVE SIDE GUARD	1
6	70-00-0289-0211-06	FRONT WHEEL OPPOSITE DRIVE SIDE GUARD	2
7	70-00-0289-0211-07	WHEEL	3
8	00-01-1000-1001-01	"DANGER, DO NOT REMOVE GUARDS" STICKER	14

GROUP 289  
SECTION 212



RS-44  
GROUP 289  
SECTION 212

<u>ITEM</u>	<u>PART NUMBER</u>	<u>PART DESCRIPTION</u>	<u>QTY.</u>
1	70-00-0289-0212-01	WHEEL SUPPORT "A"	4
2	70-00-0289-0212-02	DRIVE SIDE LEG	1
3	70-00-0289-0212-03	OPPOSITE DRIVE SIDE LEG	1
4	70-00-0289-0212-04	WHEEL SUPPORT "C"	2
5	70-00-0289-0212-05	WHEEL SUPPORT "D"	1
6	70-00-0289-0212-06	WHEEL SUPPORT "E"	2
7	70-00-0289-0212-07	SIDE FRAME	2
8	70-00-0289-0212-08	UPPER BEARING MOUNTING PLATE	1
9	70-00-0289-0212-09	FRONT AND BACK FRAME SET	1